

## Six (6) Hour EKOS™ Lysis of Fem-Fem and Fem-Pop Graft

Kamal Massis, MD - Tampa General Hospital, Radiology Associates of Tampa

### Patient History

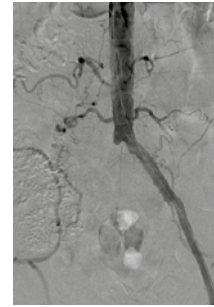
- 61 yo male with history of fem-fem and right fem-pop bypass, admitted to Emergency Room
- Patient presents with cold right foot and no palpable pulses
- Patient medical history of PVD, CHF, cardiomyopathy and atrial fibrillation
- Patient stopped taking Plavix two weeks ago

### Procedure

- Fem-fem anastomosis at the mid-portion of the left CFA requiring sheath in left proximal SFA
- 50 cm EKOS™ left SFA to the proximal right Popliteal artery
- Bolus of 6mg of tPA before starting infusion rate of 1mg/hr

### Post

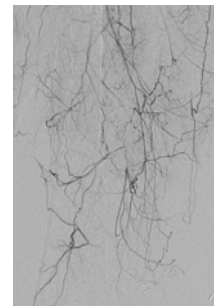
- 6 hours complete lysis of the fem-fem and fem-pop graft
- Culprit high-grade distal fem-pop anastomotic stenosis was ballooned to 6 mm with excellent outcome
- 3 vessel runoff observed



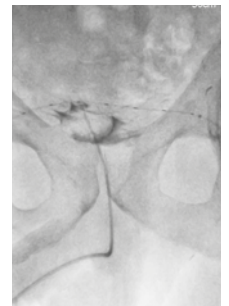
Pre Aortogram showing complete L g R fem-fem occlusion



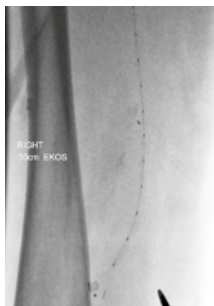
Pre Selective R CFA arteriogram showing complete occlusion of R fem-pop



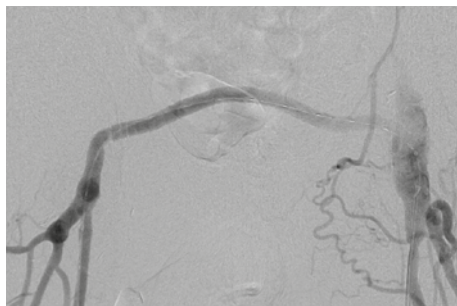
Pre Runoff showing popliteal reconstitution



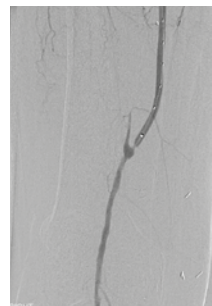
Pre EKOS™ catheter in fem-fem



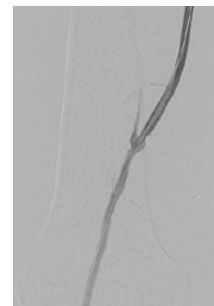
Pre EKOS™ catheter in fem-pop



Post fem-fem and proximal fem-pop



Post Culprit lesion at the distal anastomosis



Post Final



Post Runoff

Imagine where we can go.

**Indications for use:** The EkoSonic™ Endovascular System is intended for controlled and selective infusion of physician-specified fluids, including thrombolytics, into the peripheral vasculature. The EkoSonic™ Endovascular System is CE Marked for the treatment of pulmonary embolism with a  $\geq 50\%$  clot burden in one or both main pulmonary arteries or lobar pulmonary arteries, and evidence of right heart dysfunction based on right heart pressures (mean pulmonary artery pressure  $\geq 25$  mmHg) or echocardiographic evaluation. **Contraindications:** Not designed for peripheral vasculature dilation purposes. This system is contraindicated when, in the medical judgment of the physician, such a procedure may compromise that patient's condition. Such conditions include but are not limited to: Tortuous vascular anatomy compromising safe introduction of endovascular equipment - Conditions associated with increased risk of bleeding. See device instructions for use for complete prescribing information [http://ekoscorp.com/international\\_enter.htm#Resources](http://ekoscorp.com/international_enter.htm#Resources)

EKOS, the EKOS logo, Acoustic Pulse Thrombolysis and EkoSonic are trademarks of EKOS Corporation, a BTG International group company. EKOS is a registered trademark in the US, EU and certain other territories. 'Imagine where we can go', BTG and the BTG roundel logo are trademarks of BTG International Ltd. BTG and the BTG roundel logo are registered trademarks in the US, EU and certain other territories. All rights reserved. © 2015 EKOS Corporation. GxUS-EKO-2015-0199



btg-im.com